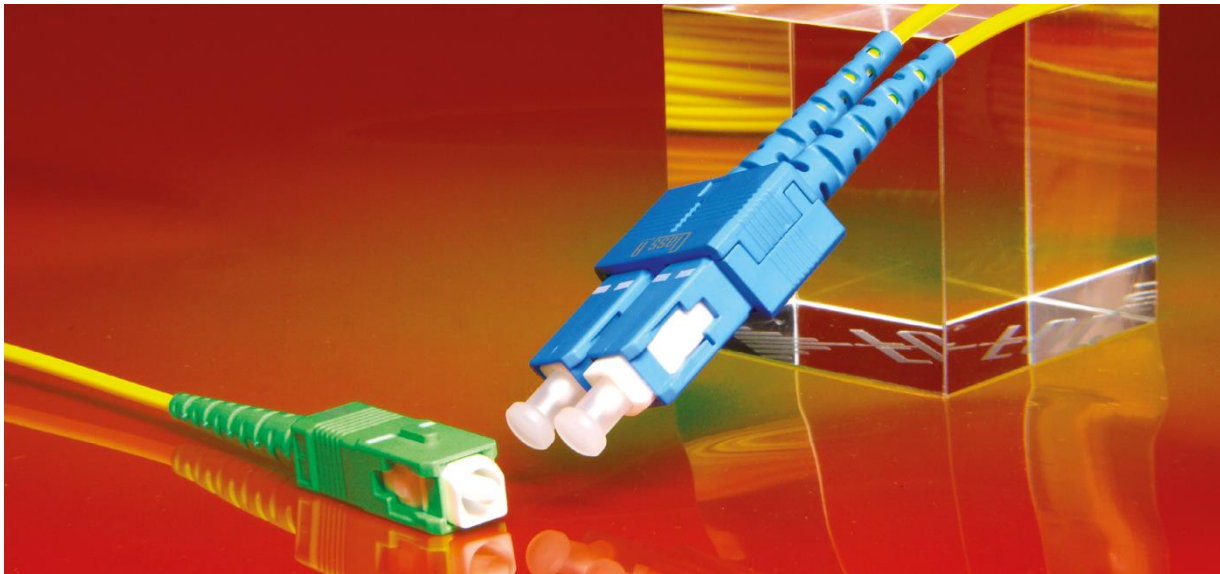


Connectors ▶ SC Class A-Connector



Adapter Simplex with quick mounting



Adapter Simplex with quick mounting



Adapter Duplex with screw mounting



Adapter Duplex with screw mounting

General Information

SC connectors are among the most widely used optical connector systems in the world. Due to their good mechanical properties they achieve excellent optical measurement values.

Material

- Connector: plastic
- Adapter: plastic housing with split and floating zirconia alignment sleeve
- Ferrule: zirconia
- Dust Cap: plastic

Standards

- SC-PC: NTT-SC, CECC 86 260, IEC 61754-4
- SC-APC: IEC 61754-4

Design Connectors

- SC-Simplex and SC-Duplex

Design Adapters

- SC-Simplex and SC-Duplex
- with/without self-closing dust cap
- Standard delivery: screw mounting
- Optional delivery: quick mounting

Colour coding

- SC-PC: blue
- SC-APC: green

Applications

- Telecommunication, CATV, LAN, MAN, WAN, measuring systems
- Industry, medical engineering, sensor technology

Specifications of connectors

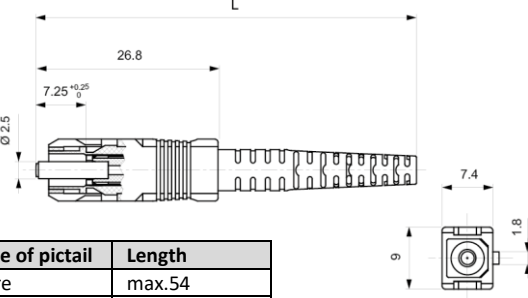
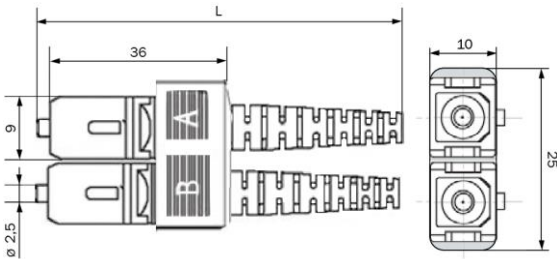
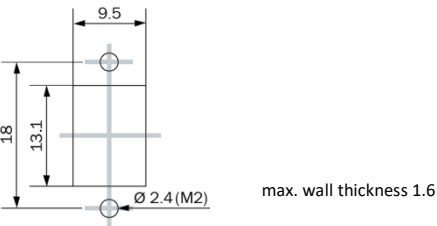
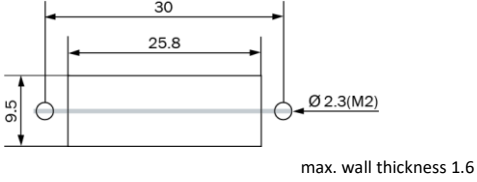
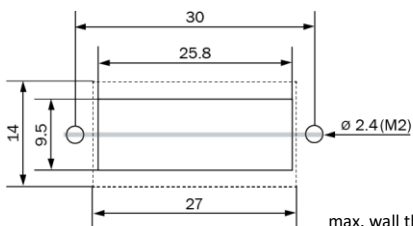
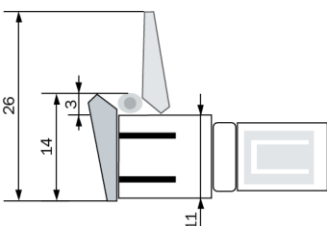
Standard	Singlemode PC	Singlemode APC	Unit	Test conditions
Insertion Loss (IL)	max: 0,1	max: 0,1	dB	IEC 61300-3-34
Return Loss (RL)	min: 50	min: 85 ¹	dB	IEC 61300-3-6
Repeatability of IL	max: ± 0,05	max: ± 0,05	dB	
Durability	1000 matings			
Operating temperature range	- 40 bis + 85		°C	depends from used type of cable

¹ measured with precision reflectometer

Active specifications

Type of fibre, geometry of cable, material of cable: please inform in the Technical Information **FOC list of cable**.

Dimensions

SC Class A Simplex	SC Class A Duplex						
 <table border="1" data-bbox="188 1131 507 1214"> <thead> <tr> <th>Type of pictail</th> <th>Length</th> </tr> </thead> <tbody> <tr> <td>Fibre</td> <td>max.54</td> </tr> <tr> <td>Cable</td> <td>max.58</td> </tr> </tbody> </table>	Type of pictail	Length	Fibre	max.54	Cable	max.58	
Type of pictail	Length						
Fibre	max.54						
Cable	max.58						
Adapter Simplex without shutter	Adapter Duplex without shutter						
							
Duplex Adapter with shutter							
							

All dimension units are mm.