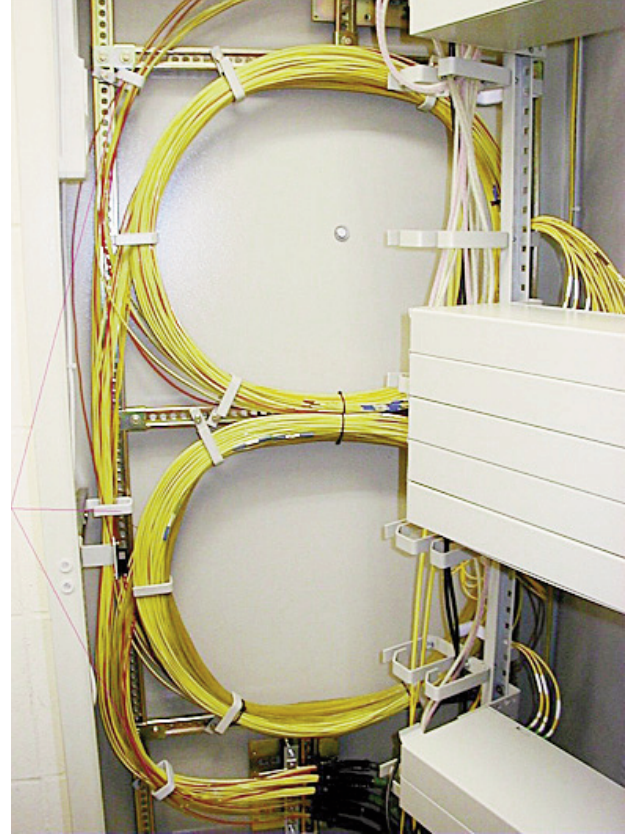
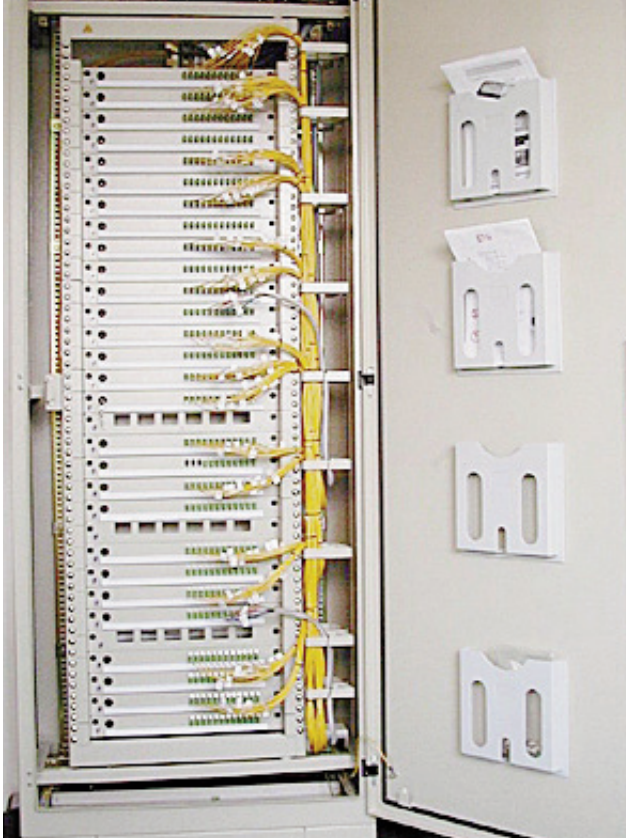




For a complete overview of the Network Systems visit our website at www.foc-fo.com.

Network Systems ▶ Distribution Rack ▶ **ETSI-64U Distribution System**



The ETS Distribution System has been designed to implement a sufficiently large number of fibre terminations on the smallest possible footprint. The rack height of 64SU enables the termination of up to 768 fibres. The splice/patching drawers are available in different variants.

- 12 x LSH (Class A) simplex with single-fibre management
- 12 x LSH (Class A) simplex with standard splice cassette
- 24 x LSH (Class A) simplex with standard splice cassettes

An excess length drawer and a coupler box complete the system.

The ETS data cabinet is delivered completely pre-assembled, i. e. no additional cost for the assembly and configuration of the data cabinet will occur.

Performance specifications of the cabinet system

- accommodation of 32 pieces ETS splice / patching drawers 2SU
- hinged mounting frame
- dust-protected closed cabinet system based on IP54

- cable routings alternatively from the top or the bottom possible, each in 3 different chambers
- cable support rails made of fibre-glass reinforced plastics
- multifibre loose buffer slacks can be fixed on the rear wall using clamps
- protected routing of multifibre loose buffers to the splice drawers using protection tubes
- separated routing of the multifibre loose buffers and patch cords in the hinged frame using a 3-chamber routing system
- only one patch cord standard length of 2m required in the rack
- completely grounded, including magnetic lighting module and document pockets

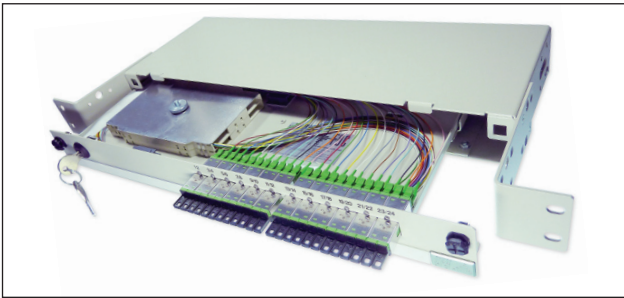
Dimensions	2100 x 800 x 400 mm HxWxD
Material	sheet steel, powder-coated
Color	RAL 7032



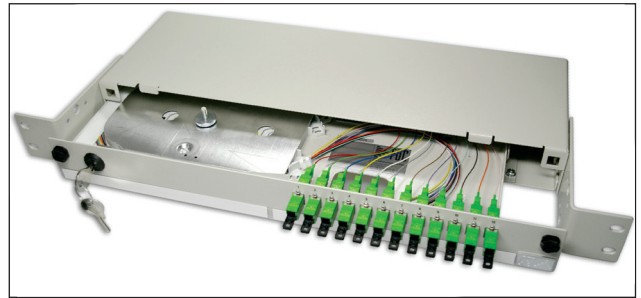
FOC – fibre optical components GmbH
Barbara-McClintock-Str. 5 | 12489 Berlin, Germany
p +49 30 565507-0 | f +49 30 565507-19
w www.foc-fo.com | e info@foc-fo.de

Release 22.04.2020
Subject to modifications
DBE-NWS-0098V006
Page 1 of 2

Splice/patching box ETSI 2SU slide-out, lockable, depth-adjustable



Variant ETSI 2SU for 12 x LSH (Class A) compact duplex



Variant ETSI 2SU für 12 x LSH (Class A) simplex

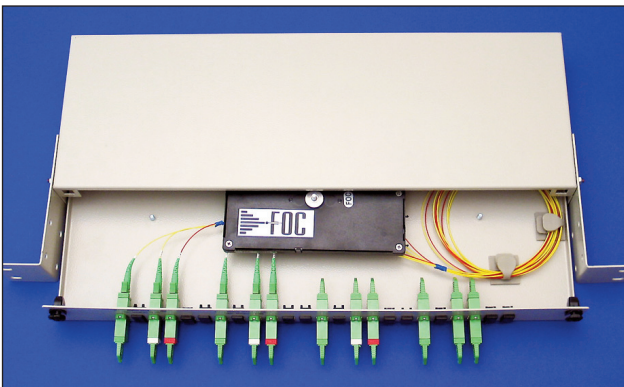
Features

- accommodation of up to 12 x LSH (Class A) (simplex) and 12 x LSH (Class A) COMPACT adapters and of up to 24 x LSH (Class A) pigtails, prepared for storing different splice cassettes and splitter modules, 1-12 or 1-24 front panel marking
- Delivery complete with 1 or 2 splice cassette(s), including mounting hardware

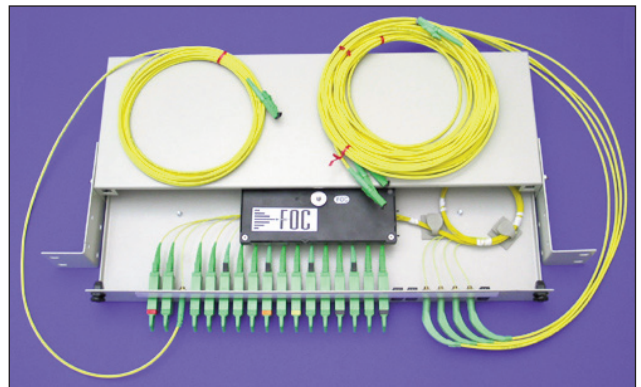
- The ETSI boxes are delivered ready for splicing (lead-in connectors installed, pigtails stripped, inserted, marked in telecom standard colours)

Material	casing made of aluminium, powder-coated
Color	RAL 7032

Coupler box ETSI 2SU slide-out, lockable, depth-adjustable



Coupler Box WDM MUX/DEMUX configuration 2x 1x2

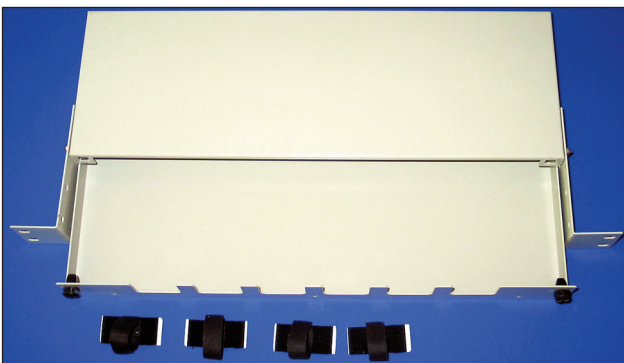


Coupler box configuration 1x4 x16

Features

- accommodation of coupler modules in the configurations:
- maximal configuration of 24 ports for WWDM/CWDM or DWDM functions (MUX/DEMUX/add drop)
 - maximal configuration of 1x32 for power splitters
 - maximal configuration of 16x(1x2) for monitor couplers

Material	casing made of aluminium, powder-coated
Color	RAL 7032



Excess length drawer

Features

- accommodation of patch cord slacks
- Velcro strips for organised storage of cable slacks

Material	casing made of aluminium, powder-coated
Color	RAL 7032